

PARAGLIDING
WORLD CUP

Cupa Mondială Brașov

24 Iunie - 1 Iulie 2023



PWC Săcele Brașov 2023



Consiliul Județean
Brașov



PRIMĂRIA
MUNICIPIULUI
BRAȘOV



HOTEL SPORT
în POIANA BRAȘOV

raMex



Agenda

- How to get there.
- Location of the HQ, Opening Ceremony, Prizegiving Ceremony.
- Event Program.
- Where to book accommodation and prices.
- Where will you fly.
- What to expect.
- Activities before and after the competition.



Links

- [Location of the HQ, Opening Ceremony, Prizegiving Ceremony.](#)
- [Airport Transfer Shuttles](#)(OTP to HQ, no more than 20 euro/person)
- [Where to book accommodation](#) - Bunloc Street
- [1st Takeoff - Bunloc](#) ; [2nd Takeoff - Postavaru.](#)
- [Best place](#) in Romania :) - to eat, drink, smile.
- [Pensiunea IRIS - Guesthouse: 30 Euro /night.](#) to book it send WSP msg: Cristian Deacu +40 730 256 938
- [Activities before and after the competition.](#)

How to get there

1. By Car
2. By Plane: Otopeni Airport + Train or Rented Car
3. By Plane: Sibiu Airport + Rented Car
4. By Plane: Cluj Airport + Rented Car
5. By Plane: Timisoara Airport + Rented Car

Means of transport in Brasov area

1. Uber, Bolt

2. City Bus

~~3. Train~~

1. By Car

Milan, Metropolitan City of Milan, Italy

Sacele

Add destination

Leave now

Options

Send directions to your phone

via A1

18 hr 5 min

1,677 km

Fastest route now due to traffic conditions

⚠ This route has tolls.

⚠ This route crosses through multiple countries.

⚠ Your destination is in a different time zone.

Details

via S Autobahn and A1

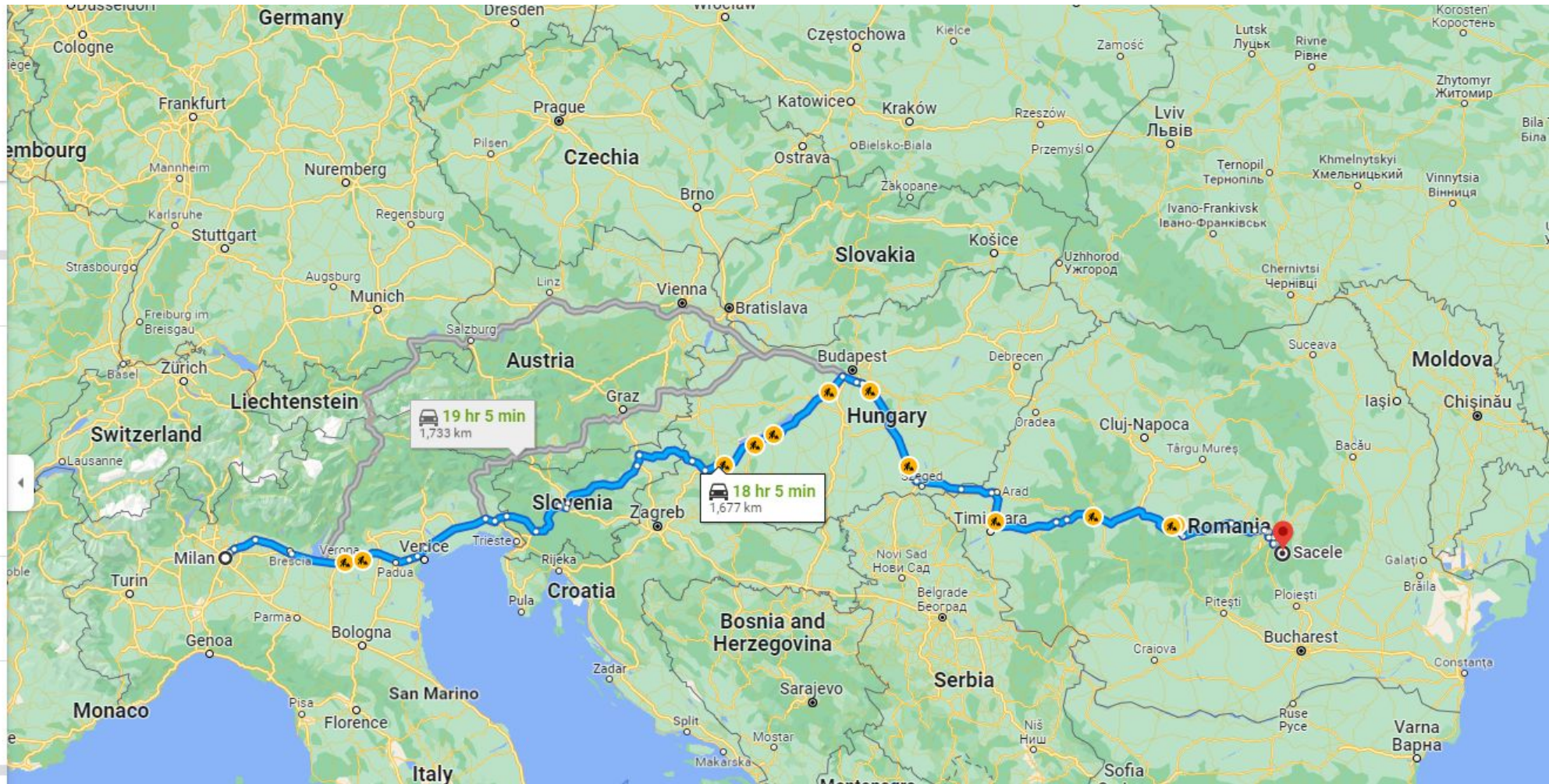
19 hr 5 min

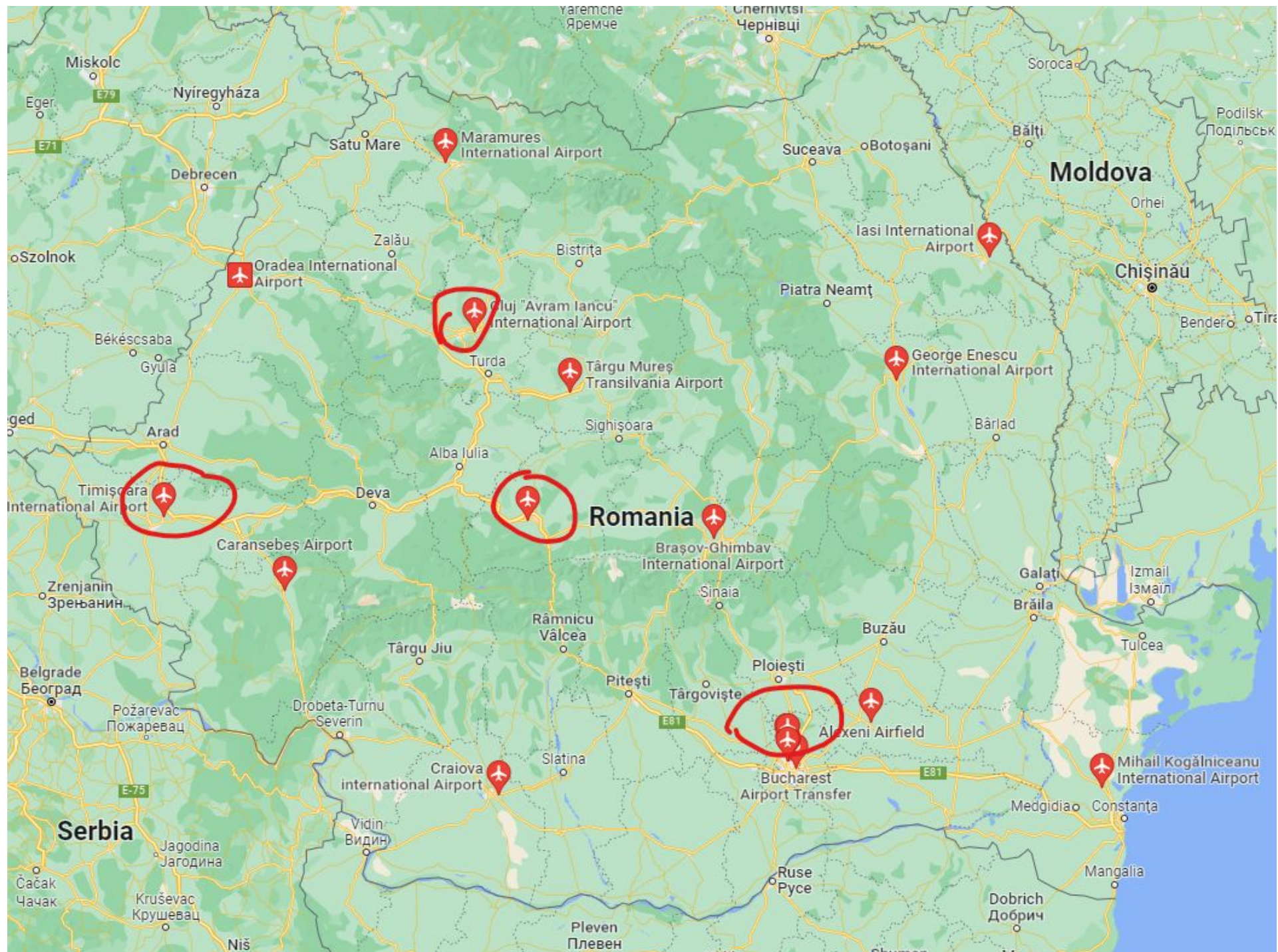
1,733 km

via A1 and A1

20 hr 20 min

1,842 km





2. By Plane: Otopeni Airport + Train or Rented Car

Best

2 hr 31

3 hr 32

1 day

Henri Coandă International Airport

Braşov

Leave now

Options

Send directions to your phone

3:07 PM—6:39 PM

3 hr 32 min

>

R

>

IR

RC RE

3:12 PM from AEROPORT HENRI COANDA

5 min

Details

3:23 PM—6:39 PM

3 hr 16 min

>

443

>

RC RE

5:47 PM—8:51 PM

3 hr 4 min

>

R

>

IR N

NT

6:27 PM—9:50 PM

3 hr 23 min

>

R

>

IC

Explore Braşov

Restaurants

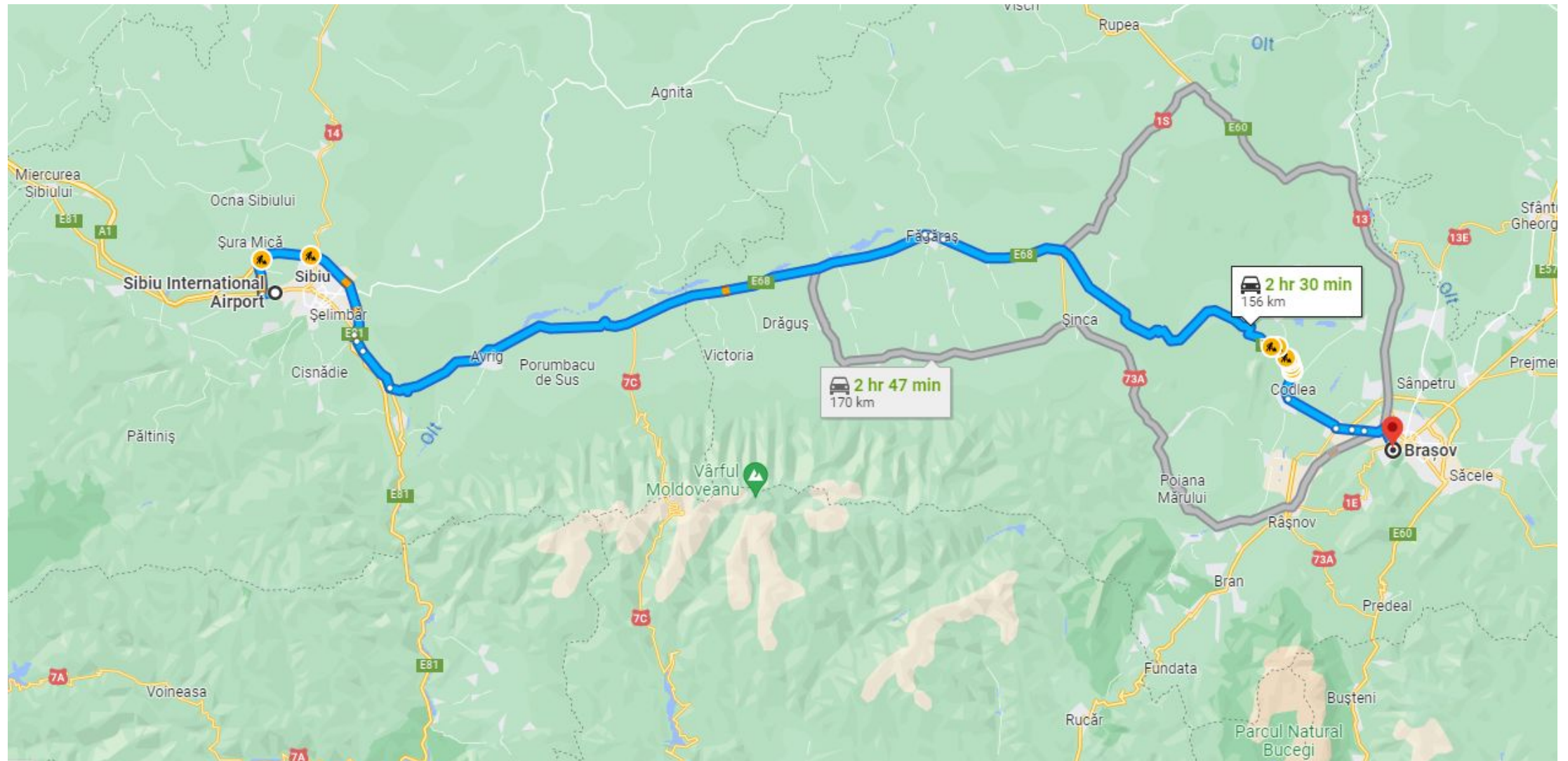
Hotels

Bars

Coffee

More

3. By Plane: Sibiu Airport + Rented Car



4. By Plane: Cluj Airport + Rented Car

○ Cluj "Avram Iancu" International Airport, S
● Braşov

+ Add destination

Leave now ▾ Options

Send directions to your phone

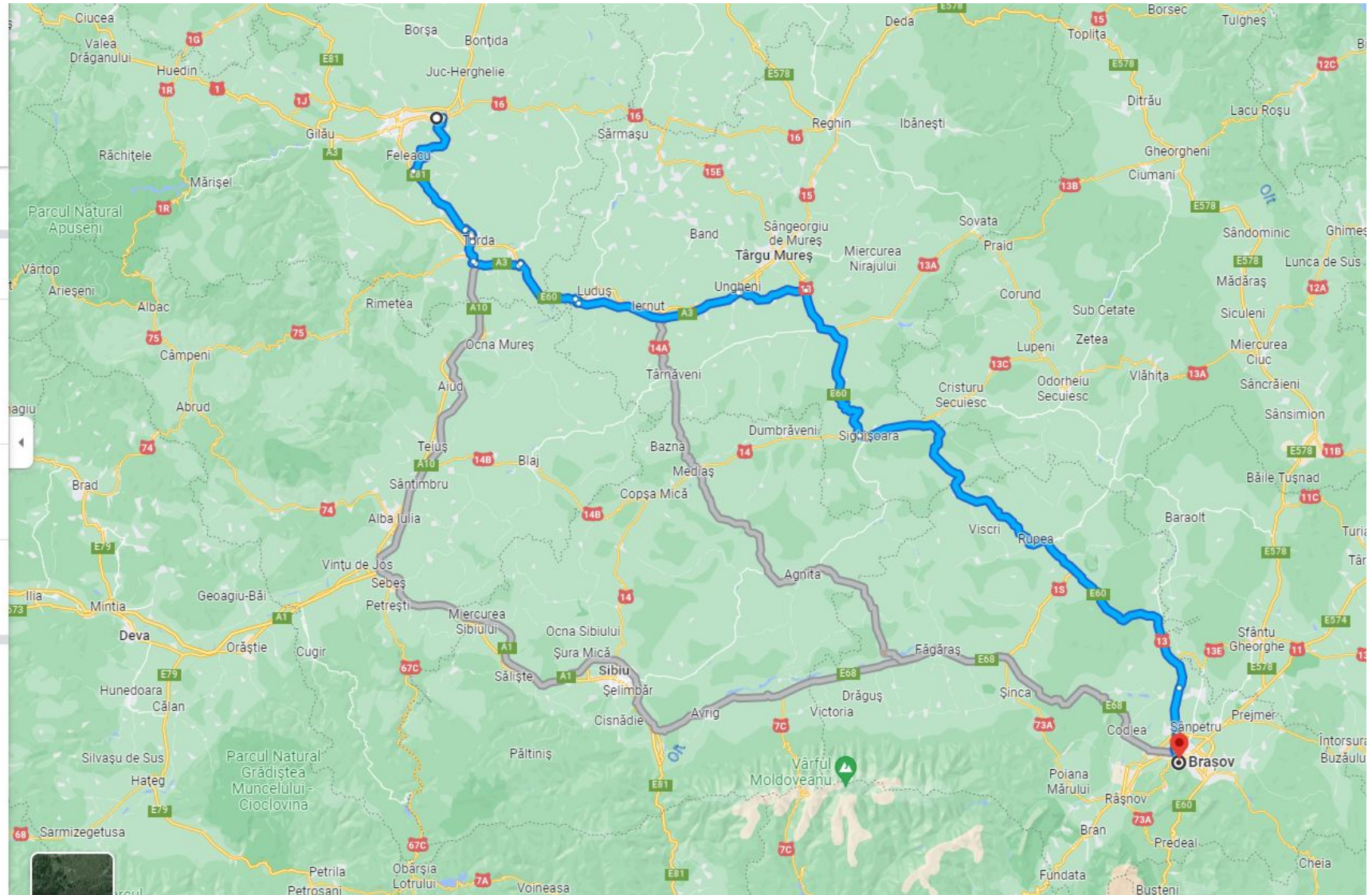
via DN13/E60 4 hr 10 min 278 km
Fastest route now due to traffic conditions
[Details](#)

via DN1/E68 4 hr 14 min 324 km

via DN14A and DN1/E68 4 hr 36 min 274 km

Explore Braşov

Restaurants Hotels Gas stations Parking Lots More



5. By Plane: Timisoara Airport + Rented Car

○ Timișoara International Airport, Strada A
⋮
📍 Brașov

⊕ Add destination

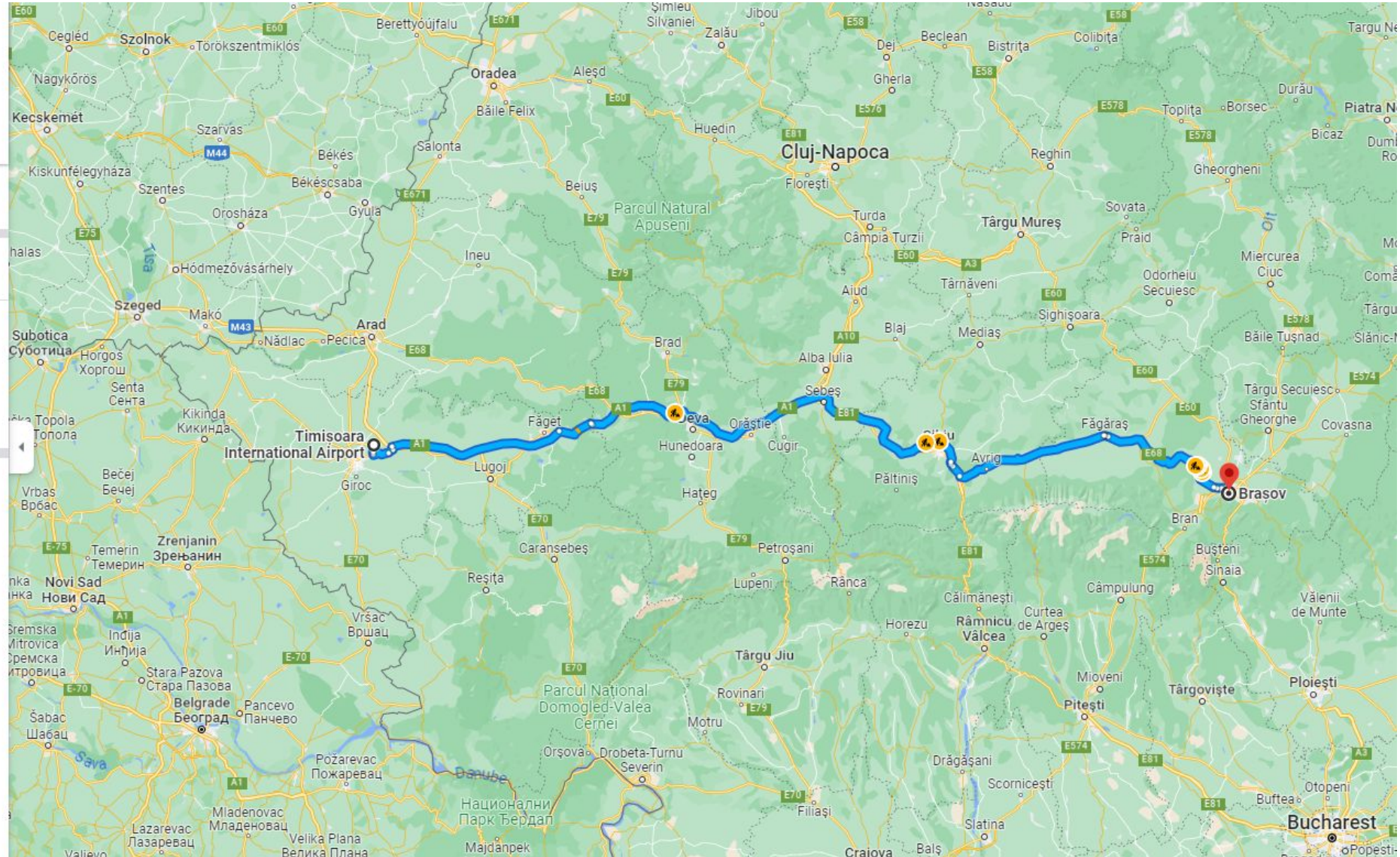
Leave now ▾ Options

📱 Send directions to your phone

🚗 via A1 and DN1/E68 4 hr 48 min
Fastest route now due to traffic conditions 406 km
Details

Explore Brașov

🍴 Restaurants 🛏 Hotels ⛽ Gas stations 🅑 Parking Lots ⋮ More



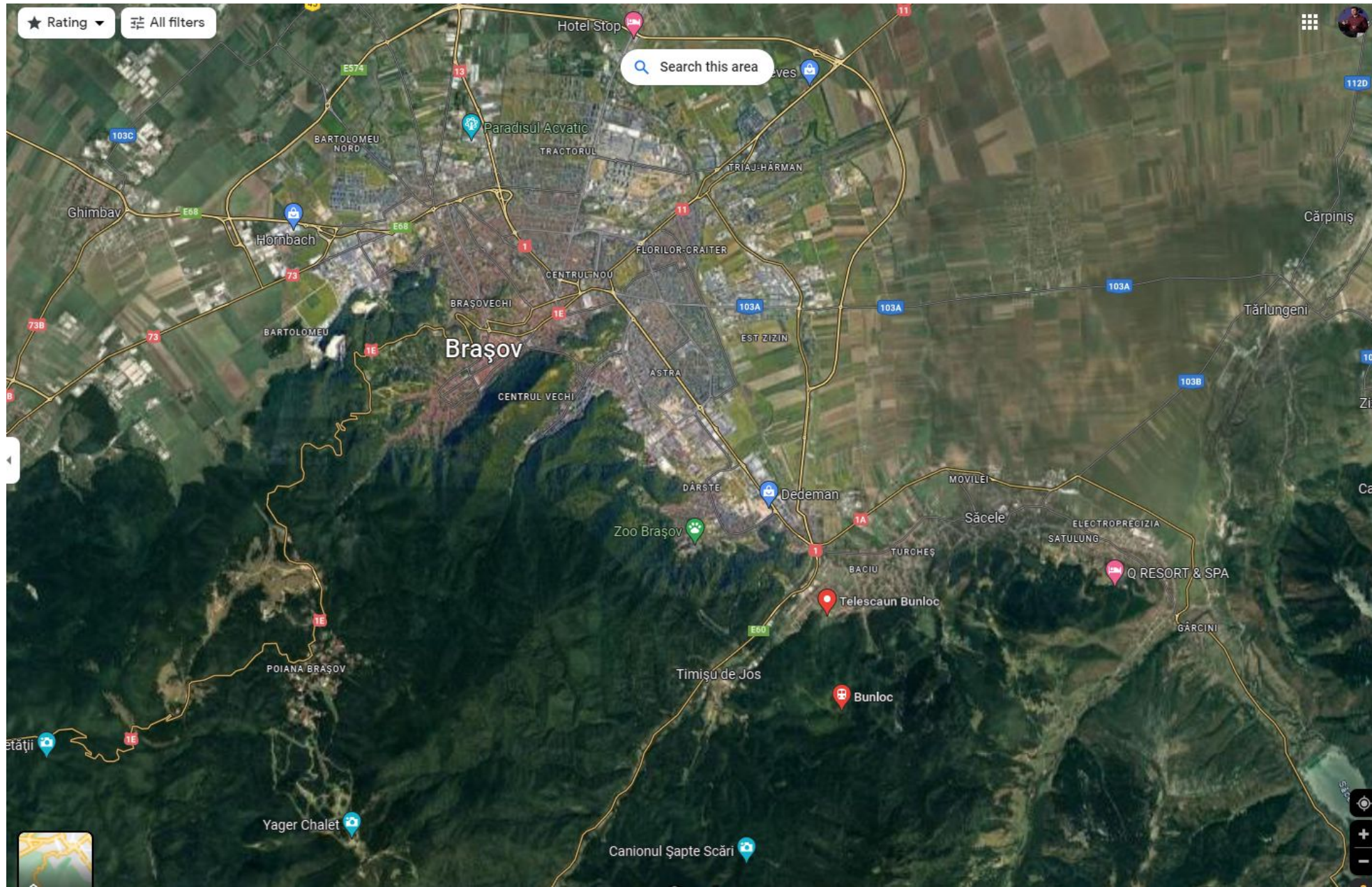
My preferred:

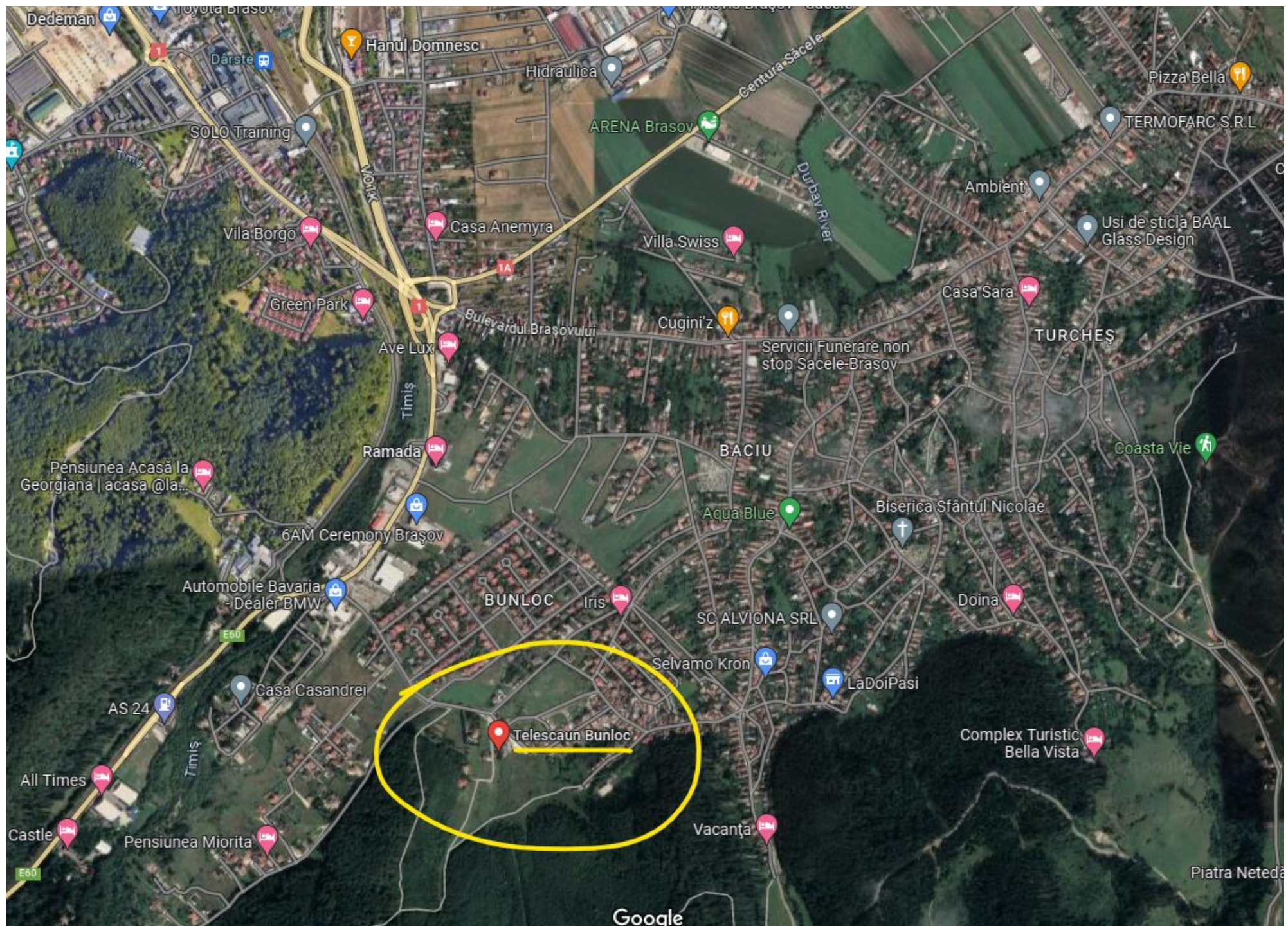
1. By Car
2. By Plane:

Otopeni Airport

Rented Car: ~ 150 Euro per week for a Dacia Logan.

Telescaun Bunloc: HQ and the General Meeting Point







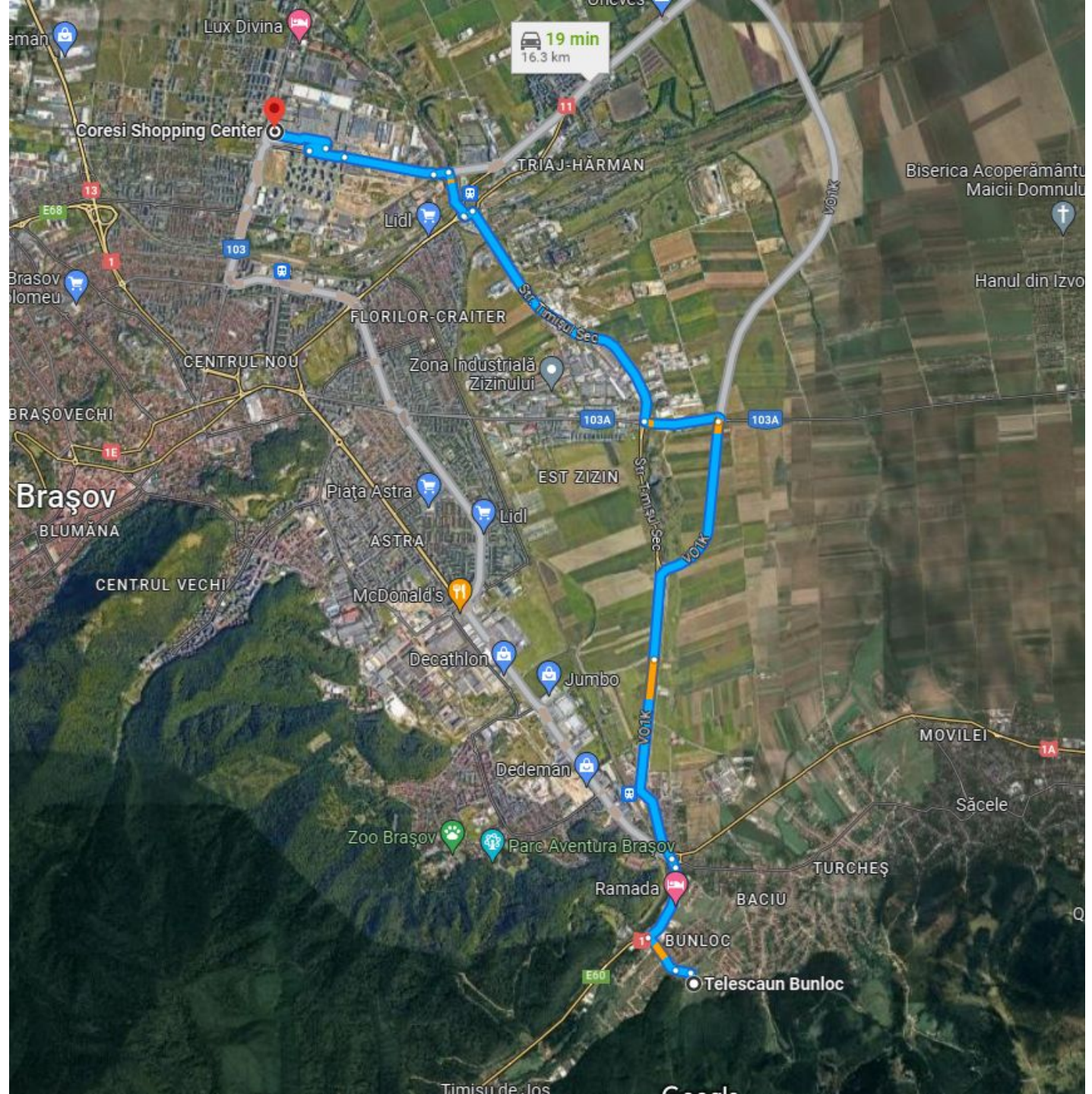
Opening Ceremony

Technical Briefing

Prizegiving Ceremony



Coresi Shopping Center



MD:

Anca Tabără



June 24th: 9:30

- a. Training Day
- b. Meeting Point: “Telescaun Bunloc” in Săcele
- c. We provide Chairlift Tickets

June 24th: 17:30

- a. Meeting Point: “Telescaun Bunloc” in Săcele
- b. Transport by Bus to the Coresi Shopping Center
- c. Opening Ceremony
- d. Technical Briefing
- e. Transport back to the “Telescaun Bunloc”

June 25th - July 1st: 9:30

- a. Competition Days
 - b. Meeting Point: “Telescaun Bunloc” in Săcele
 - c. We provide Chairlift Tickets
 - d. We provide retrieve. Land anywhere you like!
- Landing Beer/ Red Bull / Whater

July 1st : 20:00

- a. Meeting Point: “Telescaun Bunloc” in Săcele
- b. Transport provided to the Coresi Shopping Center
- c. Prizegiving Ceremony
- d. Transport back to the “Telescaun Bunloc”

June 28th : 20:00

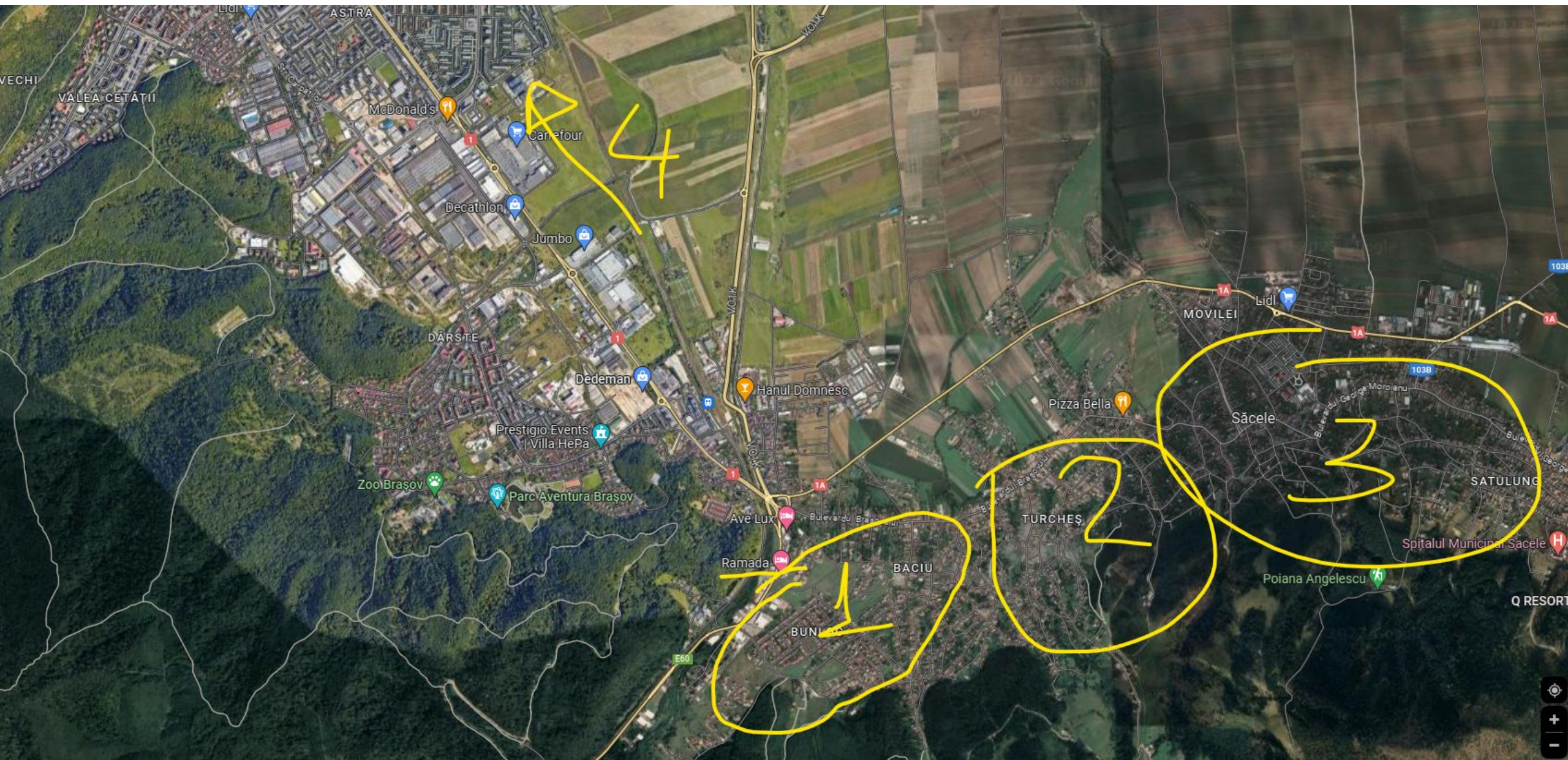
Official Dinner: Braşov “Old City” Center / Piaţa Sfatului

Transport not provided: we share cars / Uber / Bolt

July 1st : 20:00

- a. Meeting Point: “Telescaun Bunloc” in Săcele
- b. Transport provided to the Coresi Shopping Center
- c. Prizegiving Ceremony
- d. Transport back to the “Telescaun Bunloc”

Where to book accommodation and prices.



Where to book accommodation and prices

1. Near “Telescaun Bunloc”

Guesthouse = “Pensiune” - 50-70 euro per room breakfast included.

Officials stay at “Pensiunea Iris”

(4 rooms left: 30 Euro/night Breakfast Included)

2. Anywhere in Săcele, make shure they don't organize WEDINGS
3. Ramada Hotel ~ 100 Euro per room, 2 guests, breakfast
4. Brasov : nice but far from “Telescaun Bunloc”

Where do will we fly ...

1. Bunloc Takeoff: 1250m, W, **NW**, N, NE, E, Low S
15min with chairlift “Telescaun Bunloc”

2. Postavaru Takeoff: 1750m, S, **SE**

25 km drive from Telescaun Bunloc to Poiana Brasov + 10 Min with the Cable cart.

3. Mountains:

Small Mountains NW from Bunloc ~ 1250m

Piatra Mare ~ 2000m

Postăvaru ~1800m

Bucegi ~ 2500m

Ciucăș ~ 1700m







What to expect

1. 2500m average cloudbase
2. 3000m high limit for the PWC competition
3. A few Airspaces. Just one very important
4. **No strong winds**
5. +2 - +4.5 Thermals
6. 25-30 km/h average speed
7. 60-90 km triangles

What to expect

1. 2500m average cloudbase
2. 3000m high limit for the PWC competition
3. A few Airspaces. Just one very important
4. **No strong winds**
5. +2 - +4.5 Thermals
6. 25-30 km/h average speed
7. 60-90 km triangles



What to do when... not flying

1. Canionul 7 Scări
2. Braşov Old City Center
 - Black Church, Piaţa Sfatului, Braşov Citadel, Tâmpa Hill.
3. Bran Catle
4. Cetatea Rupea, Prejmer
5. Carting: Prejmer Raceway Brasov
6. Swimming: Paradisul Acvatic
7. Hiking: Piatra Craiului National Park, Bucegi National Park, Masivul Postavaru, Satele Pestera si Magura.



















